

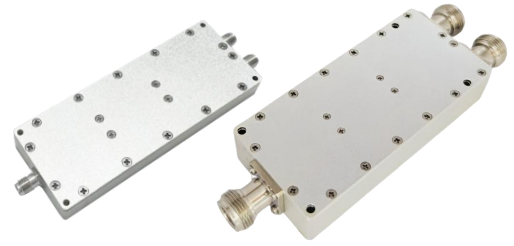


## WPD2-200-6000-30

2-Way, 0.2~6GHz

Features:  
\* Small Size  
\* Low Insertion Loss

Applications:  
\* Amplifiers  
\* Mixers  
\* Antennas  
\* Laboratory Test



### Electrical

Frequency:	0.2~6GHz
Insertion Loss:	1.7dB max.
Input VSWR:	1.3 max.
Output VSWR:	1.2 max.
Isolation:	19dB min.
Amplitude Balance:	±0.3dB
Phase Balance:	±2°
Impedance:	50Ω
Power @SUM Port:	30W max. as divider 2W max. as combiner

### Mechanical

Connectors*1:	N Female SMA Female TNC Female SMP Male
---------------	--

[1]Female connectors can be replaced with male connectors on request.

### Environmental

Operating Temperature:	-35~+75°C
Non-operating Temperature:	-45~+85°C

### How To Order

**WPD2-200-6000-30-Y**

Y: Connector type

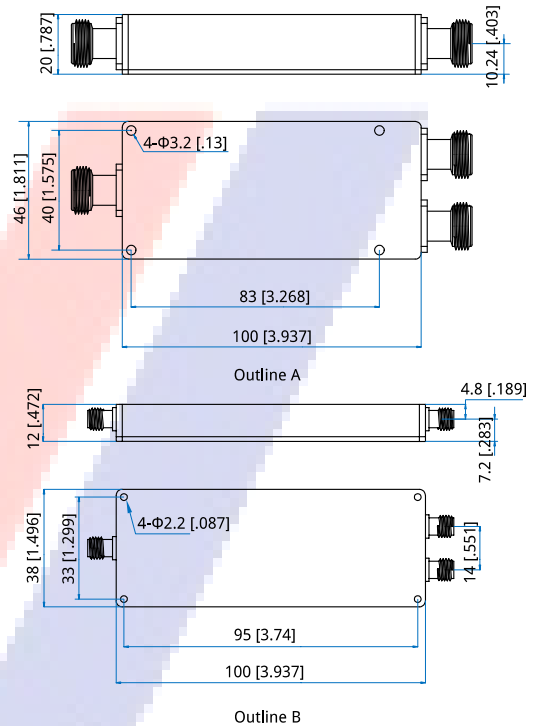
Connector naming rules:  
S - SMA Female (Outline B)  
N - N Female (Outline A)  
T - TNC Female  
P - SMP Male

Examples:

To order a 2-way power divider, 0.2~6GHz, 30W, SMA female, specify WPD2-200-6000-30-S.

Customization is available upon request.

### Outline Drawings

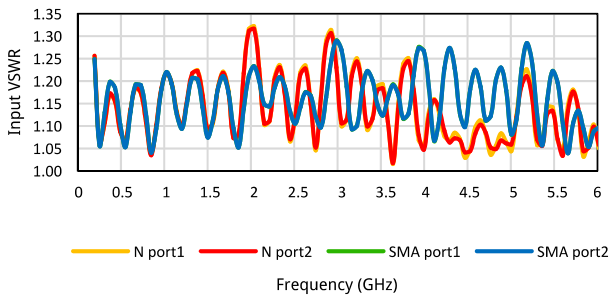


Unit: mm [in]  
Tolerance: ±0.5mm [±0.02in]

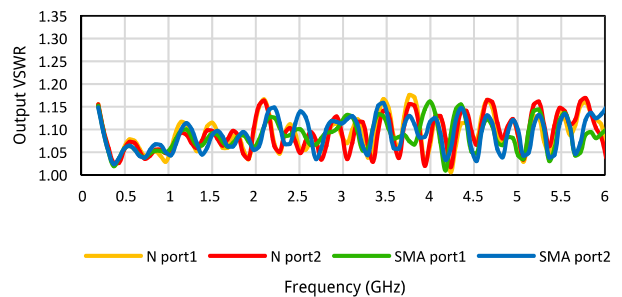


## Typical Performance Curves

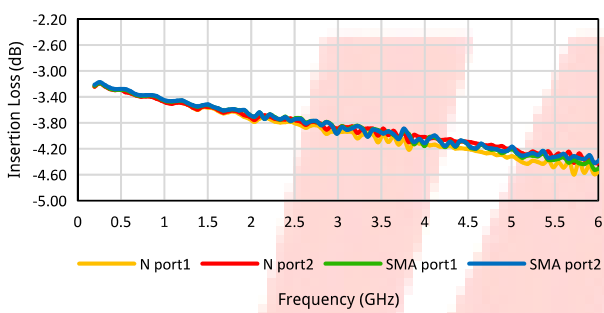
Input VSWR vs. Frequency



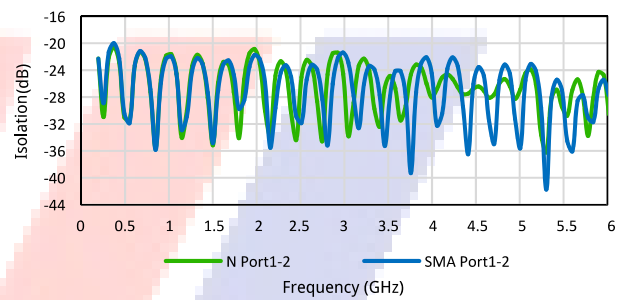
Output VSWR vs. Frequency



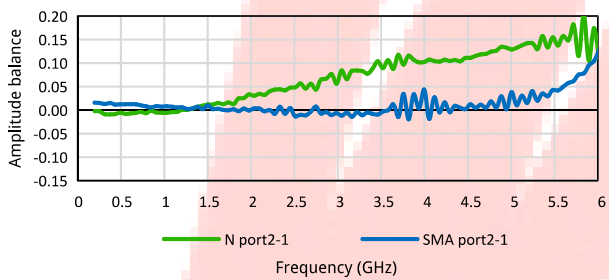
Insertion Loss vs. Frequency



Isolation vs. Frequency



Amplitude balance vs. Frequency



Phase balance vs. Frequency

