



WASI-B

SMA to BMA

Features:
* Low VSWR

Applications:
* Wireless
* Transmitter
* Laboratory Test
* Radar

Electrical

Frequency: DC~6GHz
DC~18GHz (Outline E, F)
VSWR: 1.15 max.
1.25 max.(Outline E)
Impedance: 50Ω

Mechanical

RF Connectors: SMA
BMA
Mating Life Cycle: 500 cycles
Outer Conductor: Gold plated brass or Ternary alloy plated brass
Dielectric: PTFE
Inner Conductor: Gold plated beryllium copper

Environmental

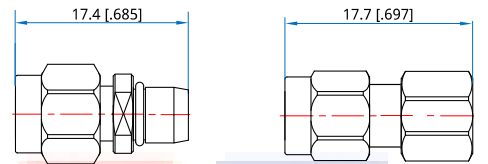
Temperature: -55~+165°C

How To Order

- WASI-MM-B** - SMA(m) to BMA(m), Outline A
- WASI-MF-B** - SMA(m) to BMA(f), Outline B
- WASI-FM-B** - SMA(f) to BMA(m), Outline C
- WASI-FF-B** - SMA(f) to BMA(f), Outline D
- WASIH-FF-B** - SMA(f) to BMA(f), Bulk head, Outline E
- WASIL-FM-B** - SMA(f) to BMA(m), Flange mount, Outline F
- WASIL-FF-B-02** - SMA(f) to BMA(f), Flange mount, two holes, Outline G

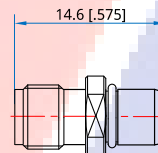
Customization is available upon request.

Outline Drawings

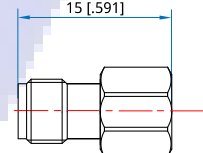


Outline A

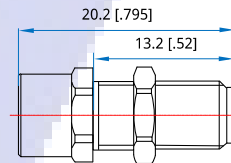
Outline B



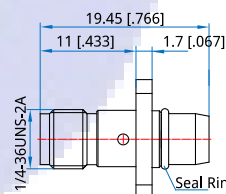
Outline C



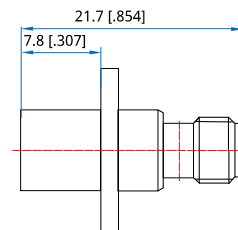
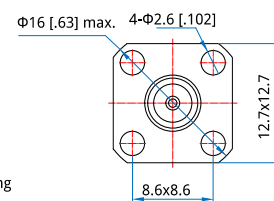
Outline D



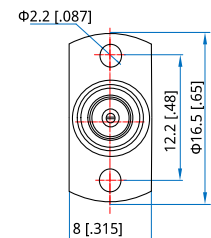
Outline E



Outline F



Outline G



Unit: mm [in]
Tolerance: ±0.2mm [±0.008in]